

# DAM Integration - Widen

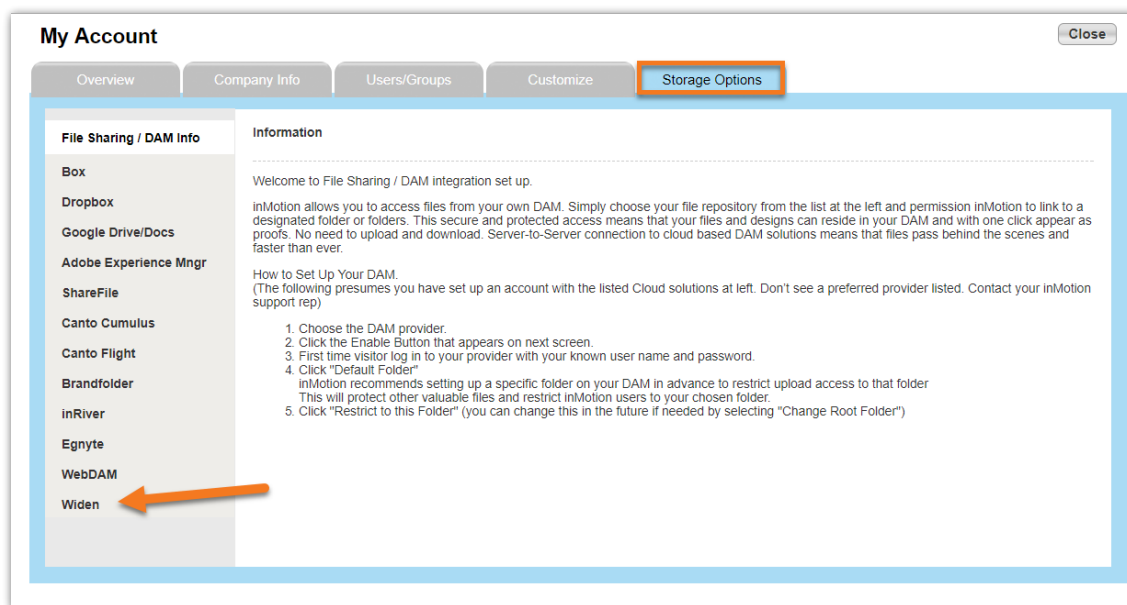
Published on 01/13/2019

## What is a DAM?

A Digital Asset Management (DAM) product is a business solution for organizing, storing and retrieving rich media and managing digital rights and permissions. Media assets include photos, music, videos, animations, podcasts and other multimedia content. Digital Asset Management solutions provide a useful way to maintain a centralized repository for your project's files, allowing shared access to all up-to-date records and data.

## Setting up your Widen Integration

To integrate your team's DAM with inMotion, go to **Account > Account Settings > Storage Options > Widen**.



Once a you select **Widen**, you will be prompted by a series of instructions (as pictured below) to assist you in enabling your account. As instructed in step 1, please enter your **'account subdomain.'** For example, if your URL is "https://inMotionNow.widencollective.com," you would enter "inMotionNow" as your subdomain. You can move to the next step by clicking the **Enable** button

## WIDEN® Integration Setup

Instructions to enable your account

1. Please enter your account subdomain:

https://  .widencollective.com

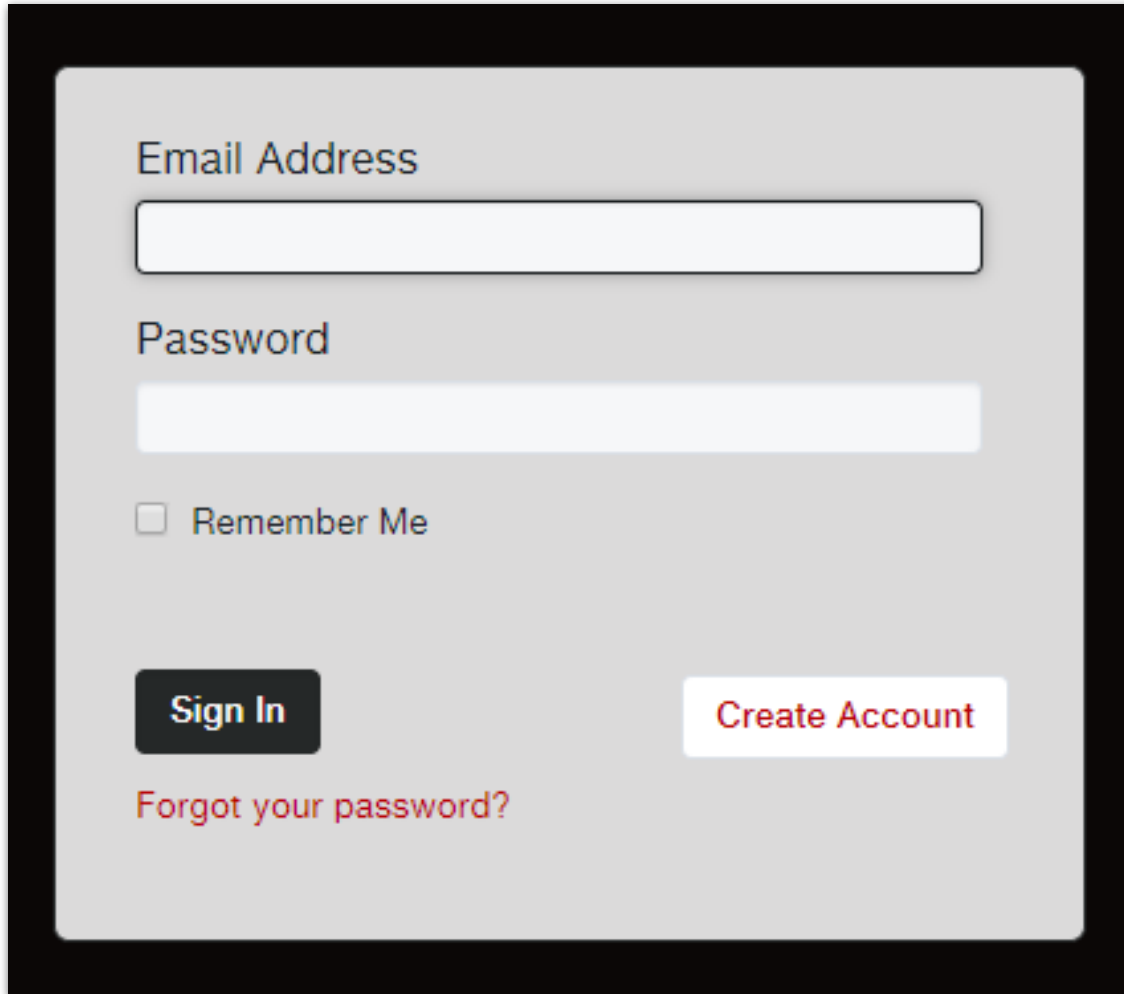
2. Click the Enable Button.
3. First time visitor log in to your provider with your known user name and password.
4. Click "Default Folder"  
inMotion recommends setting up a specific folder on your DAM in advance to restrict upload access to that folder. This will protect other valuable files and restrict inMotion users to your chosen folder.
5. Click "Restrict to this Folder" (you can change this in the future if needed by selecting "Change Root Folder")

**Enable**



We strongly recommend that admins set up their account's DAM integration(s) with a service account instead of a personal account. This will allow only the files that you want your users to access to be the only ones made available.

On the next screen, enter your **'Email Address,'** and **'Password,'** then click the **Sign In** button.

A login and sign-up form with a light gray background and a black border. It includes fields for "Email Address" and "Password", a "Remember Me" checkbox, a "Sign In" button, a "Create Account" button, and a "Forgot your password?" link.

Email Address

Password

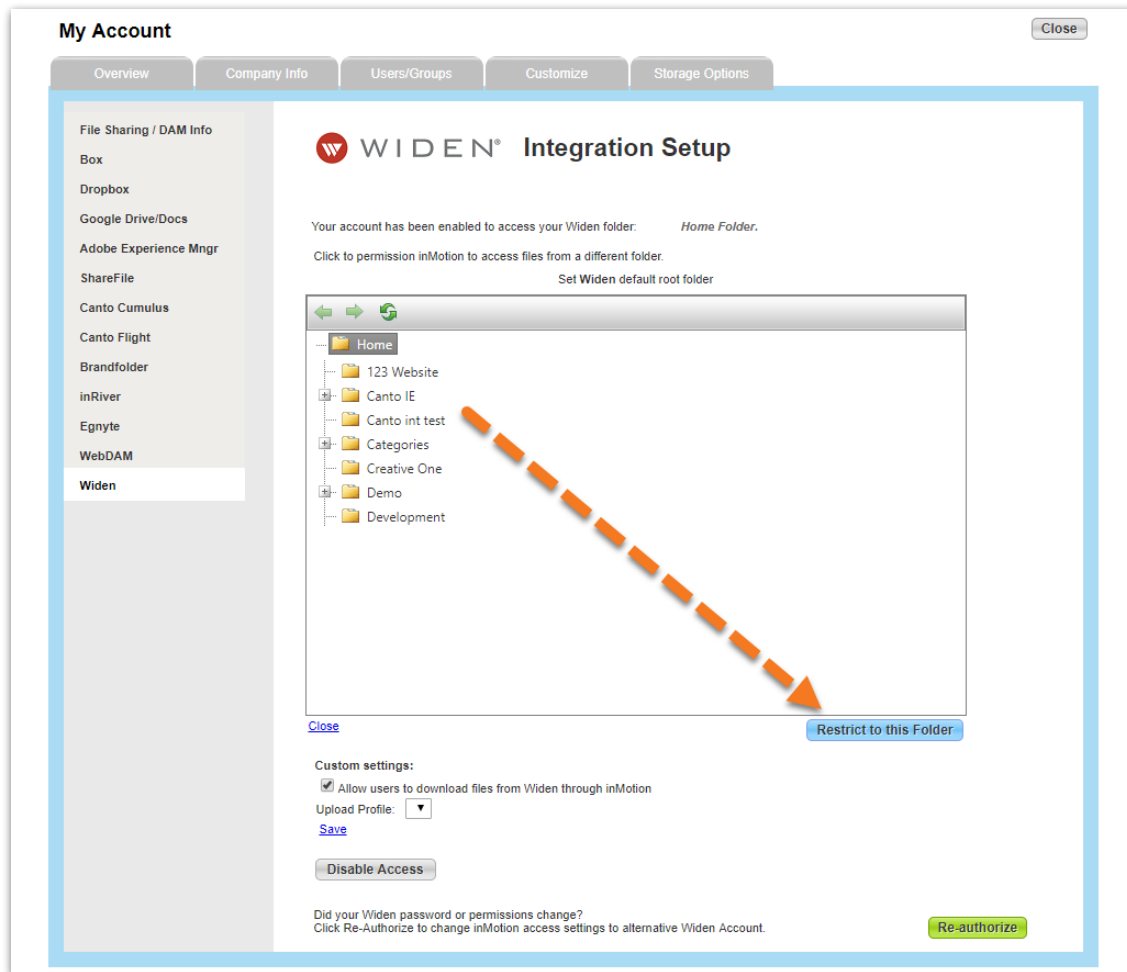
☐ Remember Me

**Sign In** **Create Account**

[Forgot your password?](#)

Now that you have granted inMotion access to your Widen account, you will need to select a **'Root Folder,'** which is where all your files from inMotion will be stored. Simply click on which folder you would like to select, then click the **Restrict to this Folder** button.

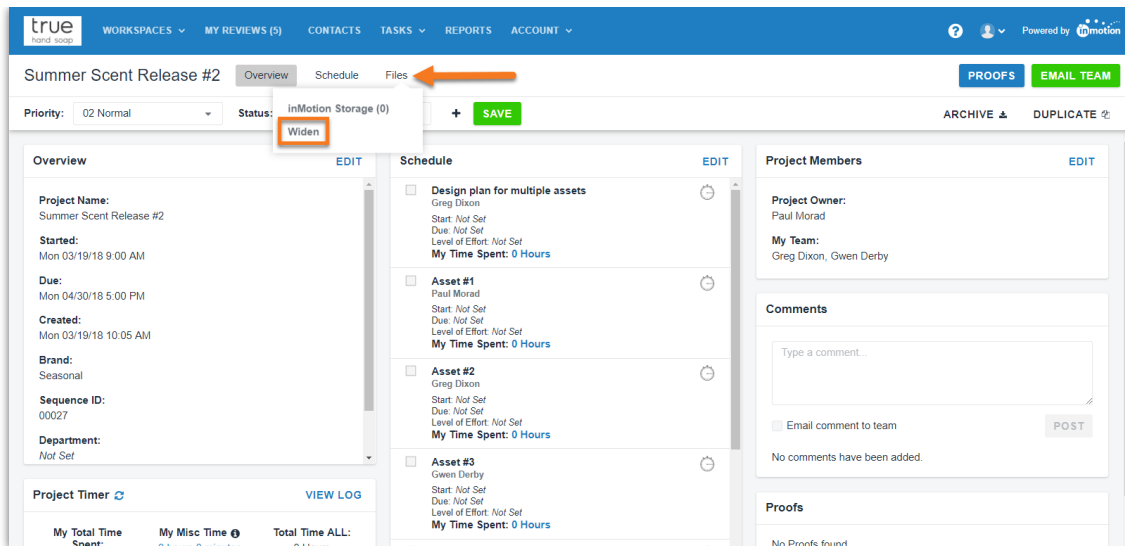
From this page, you can also enable/disable permissions controlling the ability to download files.



Your DAM is now setup. You can close out of settings and use your new integration.

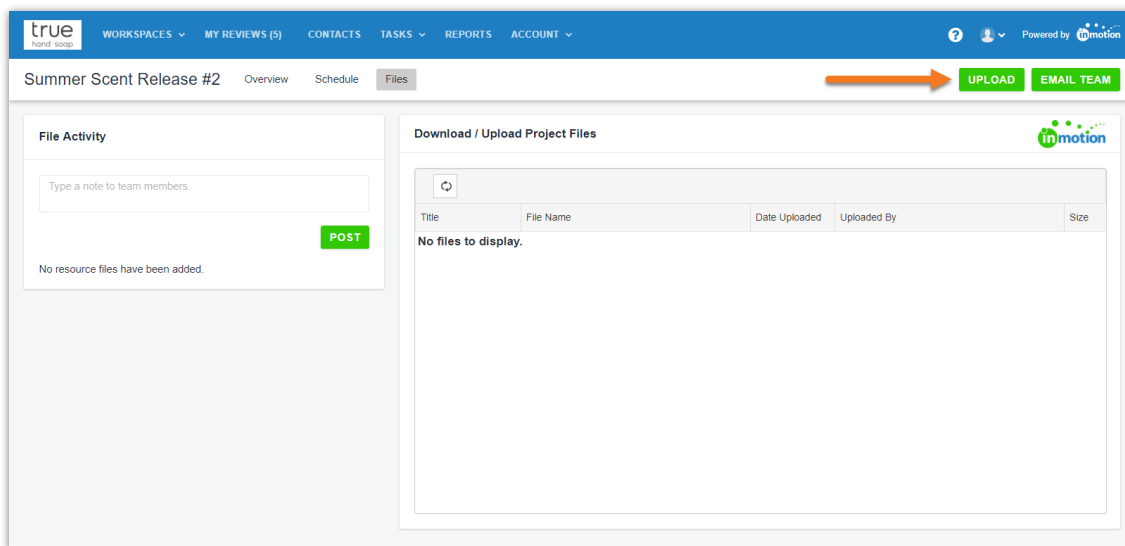
## Uploading Project Files

With your Widen integration, you can upload shared working project files from inMotion. To upload a file, go to the Project Dashboard and click **Files** near the top of the page then **'Widen'**. If you are in a new project, inMotion will prompt you to name a new project folder in Widen. This will associate the new project folder with your project.



If you have any project files created prior to the newly created project folder in inMotion, you will want sign into Widen and move them to the project folder.

Once in the Widen storage page, click the **UPLOAD** button. Either drag & drop or click **CHOOSE FILE** to select the file(s) you'd like to upload. To download or delete files in the project folder, right click on the file name and click '**Download**' or '**Delete**.'



You can navigate back to the Project Dashboard using the **Overview** button at the top-left of the page. Now, all team members can access the project files in one centralized location.



## Uploading Proof Assets from Widen

Project files stored in Widen are also available on the Proof Upload screen when you click the button with the **'Widen'** logo in Step 1.

Add Content SWITCH TO STREAMLINE UPLOAD CANCEL

1

Add Assets

inmotion WIDEN

Drag files to upload, or [browse](#)

[View Supported File Types](#)

Capture

FROM URL FROM EMAIL

2

Choose a Template

Name Your Proof

Required (Name displayed to Reviewer)

Assign to a Project

No assets loaded.

Send Proof. CONTACTS WORKFLOW ROUTING MANAGER