

# DAM Integration - Adobe Experience Manager (AEM)

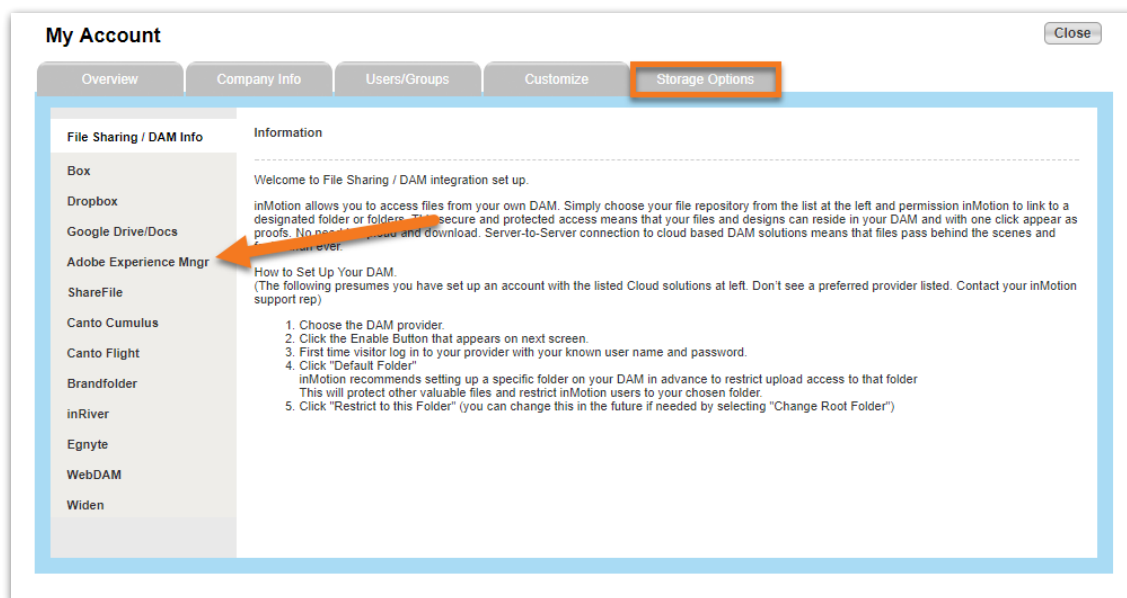
Published on 03/05/2018

## What is a DAM?

A Digital Asset Management (DAM) product is a business solution for organizing, storing and retrieving rich media and managing digital rights and permissions. Media assets include photos, music, videos, animations, podcasts and other multimedia content. Digital Asset Management solutions provide a useful way to maintain a centralized repository for your project's files, allowing shared access to all up-to-date records and data.

## Setting up your AEM Integration

To integrate your team's DAM with inMotion, go to **Account > Account Settings > Storage Options > Adobe Experience Manager**.



Once a you select AEM, you will be prompted to enter your AEM account **'Server Address,' 'Username,'** and **'Password,'** then click **Allow Access**.

### My Account

Close

OverviewCompany InfoUsers/GroupsCustomizeStorage Options

File Sharing / DAM Info

Box

Dropbox

Google Drive/Docs

Adobe Experience Mngr

ShareFile

Canto Cumulus

Canto Flight


Brandfolder

inRiver

Egnyte

WebDAM

Widen

 Adobe Experience Manager

## Integration Setup

How to Connect Your Adobe Experience Manager Account to inMotion

1. Fill out the information below.
2. Click the "Enable" button.
3. Once inMotion has connected to Adobe Experience Manager, you will be presented with additional setup instructions.

Server Address:   
Example: subdomain.example.com

Username:

Password:

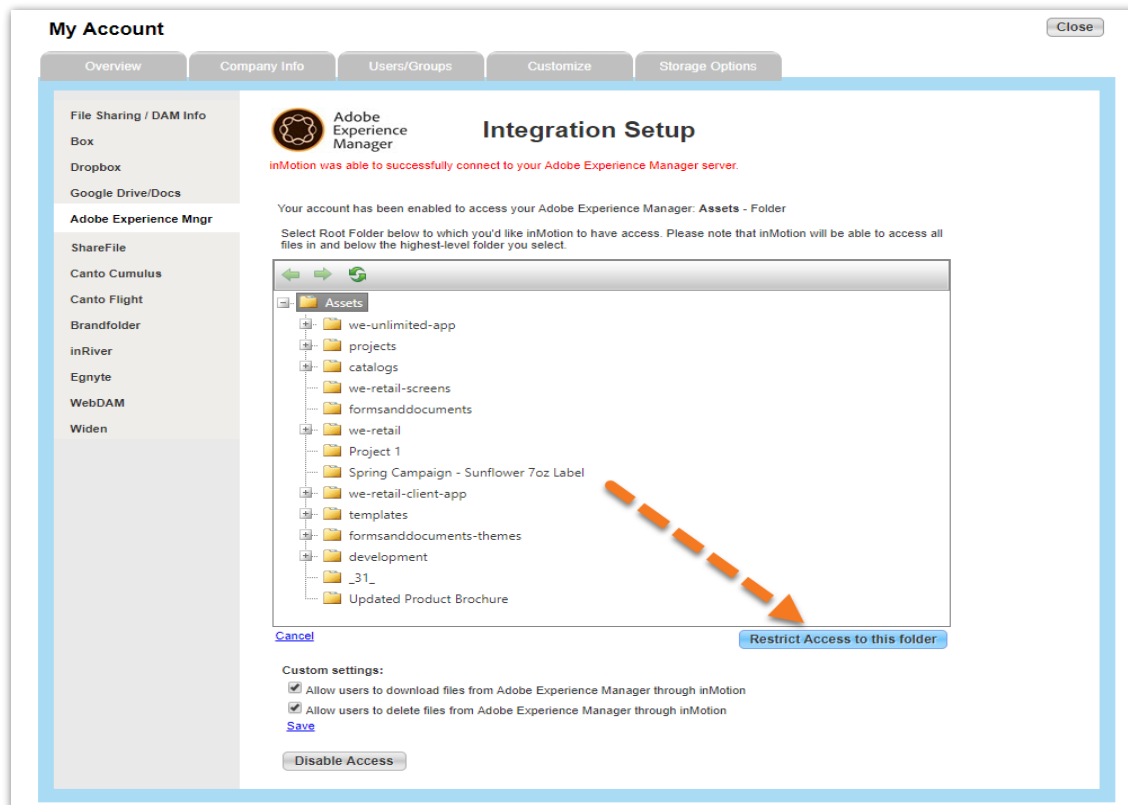
Allow Access



We strongly recommend that you set up your account's DAM integration(s) with a service account instead of a personal account. This will help to ensure that only applicable team files are utilized with inMotion.

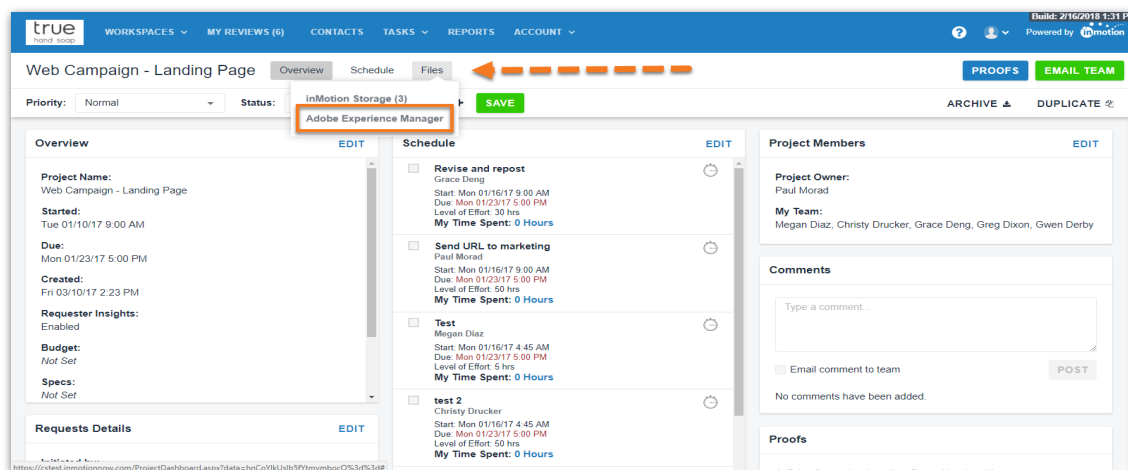
Now that you have granted inMotion access to your AEM account, you will need to select a **'Root Folder,'** which is where all your files from inMotion will be stored. Simply click on which folder you would like to select, then click the **'Restrict Access to this Folder'** button.

From the bottom of this page, you can also enable/disable file download and file delete permissions for users. You can now use your AEM integration.



## Uploading Project Files

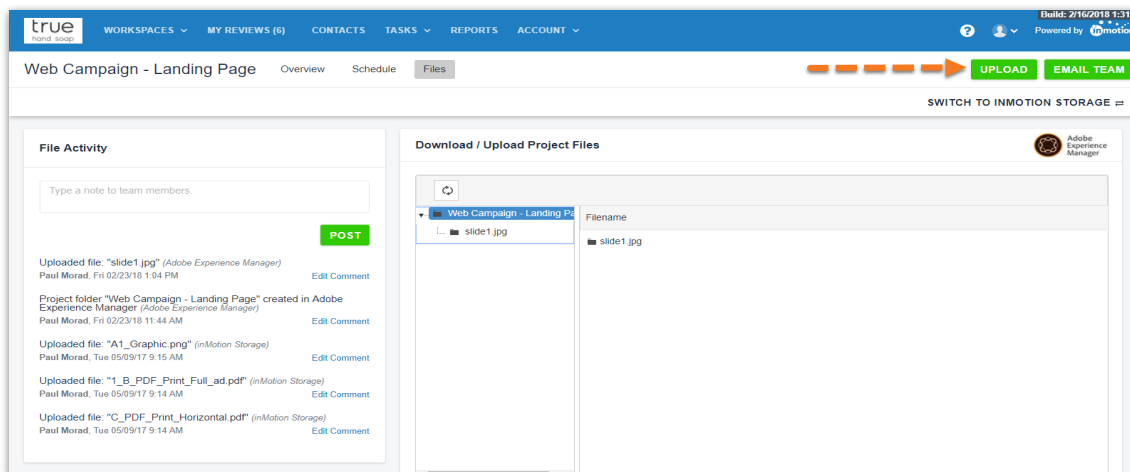
With your AEM integration, you can upload shared working project files from inMotion. To upload a file, go to the Project Dashboard and click **Files** near the top of the page. If you are in a new project, inMotion will prompt you to name a new project folder in AEM. This will associate the new project folder with your project.





If you have any project files created prior to the newly created project folder in inMotion, you will need to sign into AEM and move them to the project folder.

Once in the AEM storage page, click the green **UPLOAD** button. Either drag & drop or click **CHOOSE FILE** to select the file(s) you'd like to upload. To download or delete files in the project folder, right click on the file name and click **Download** or **Delete**.



You can navigate back to the Project Dashboard using the **Overview** button at the top-left of the page. Now, all team members can access the project files in one centralized location.

## Uploading Proof Assets from AEM

Project files stored in AEM are also available on the Proof Upload screen when you select the '**Adobe Experience Manager**' logo in Step 1.

Add Content

CANCEL

1

Add Assets

Drag files to upload, or [browse](#)

[View Supported Formats](#)

Capture

FROM URL

FROM EMAIL

2

Choose a Template

Name Your Proof

Product Label - Sunflower

[Copy project name to proof](#)

Assign to a Project

LiveWell - Half Page Ad

☐ Place Proof on Hold

3

Attach Reference Files

Drag files to upload, or [browse](#)

No assets loaded.

Send Proof:

CONTACTS

WORKFLOW

ROUTING MANAGER

Select the applicable proof file(s) and proceed with proof upload as normal.